

### About Energy Living Lab Association

The Energy Living Lab Association (ELLA) has been created in 2020 as **an associative spin-off to replicate, disseminate and communicate living lab approaches in the energy field**. It supports an ecosystem of actors in using methods and tools and invites People & Institutions from the Public, Private, Governmental, Academic sector and civil society to co-design solutions for Energy Decarbonisation

### Our services

#### Interactive workshops

- Events organisation & communication
- Facilitation and animation
- Support and consulting

#### Tools & methods

- Design thinking & Living Labs approaches
- Co-design with stakeholders
- Serious game & gamification

#### Project development & coordination

- Coordination of national projects
- Project management
- Ecosystems & stakeholders management

#### Access to community

- Energy & Living Lab network in CH & EU
- Support for ENOLL certification
- Access to best practices

### What is an ELLA contributing member?

Individuals and companies can join the association as **individual contributing members to actively participate in ELLA activities and services**.

### What are the benefits?

Contributing members have access to :

- services offered by the Energy Living Lab Association
- mandates issued by the association and may participate in mandates via the association for a third party
- our network, which includes experts, private and public bodies and academic organisations in CH and EU
- events organised by the association
- our Capacity Building Programme
- national and international R&D projects

### What are the requirements?

Each member has to pay an annual contribution of CHF 100 per year (CHF 50 for students, unemployed people, pensioners).

A percentage of the total invoiced amount of mandates carried out through ELLA is deducted to cover administrative and quality control management costs

The contributing member will participate in the activities as independent individual and need to be insured on its own.

### How to become a member?

1

**Complete and sign the association's Membership application form** and sent it by e-mail to [info@energylivinglab.com](mailto:info@energylivinglab.com)

2

**The application will be assessed and approved** by the association's committee by a majority of all its members during a meeting.

3

Once the application has been approved, **the new member will be notified** by e-mail. He will **receive an Agreement to sign and send**.

**Any questions?** Contact [laura.minisini@energylivinglab.com](mailto:laura.minisini@energylivinglab.com)



# Co-designing an energy decarbonised and desirable future.

## Our team

### Committee



Joëlle Mastelic  
President



Florian Bürki  
Treasurer & Secretary

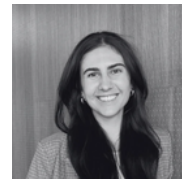
### Employees



Laura Minisini  
Project manager



Colm Kuonen  
Communication manager

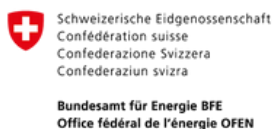
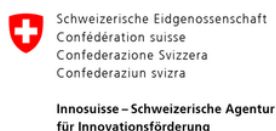


Anic Grand  
Event manager

## Our partners



Scuola universitaria professionale della Svizzera italiana



## Our ongoing projects



# NATIONAL OPEN INNOVATION CAMP